

CHESNEYS

The Bronze Urn

INSTALLATION & USER MANUAL

www.chesneys.co.uk

Decorative Fuel Effect Appliances

Technical Manual

Technical PIN: 0359CR1578

User and Installation Instructions

The Bronze Urn



Available in Natural Gas and LPG

IMPORTANT:
Please read these instructions
carefully before installation or use.

These instructions are only valid if the following country code is on the appliance.

This appliance must be installed and serviced by a qualified person in accordance with local and national regulations.

The flue system must be installed and inspected by a qualified person in accordance with local and national regulations.

Contents

Section	Pages
1 Unpacking / Unit Parts	5
2 Technical Data	6-7
3 Installation Parameters	8-9
4 Installation	10-14
5 Burner Information	15
6 Burner Control Systems	16
7 Commissioning the Fire Unit	17
8 Briefing and Handover to the Customer	18
9 Servicing	19-22
10 Fault Finding	23-24
11 User Instructions	25
Fireguards	25
Lighting the Appliance	29
Changing the batteries	32
Cleaning	33
12 Installer Checklist	34
13 Dealer and Installer Information	35
14 Annual Service Record	36-37
15 Warranty Registration	38

1. Unpacking

The appliance is supplied with the URN bowl casting in one box and all other parts identified in the diagram below in separate box.

Remove the appliance from its packaging, check that it is complete and undamaged.

If satisfied by the condition and the contents is as specified, proceed with the installation.

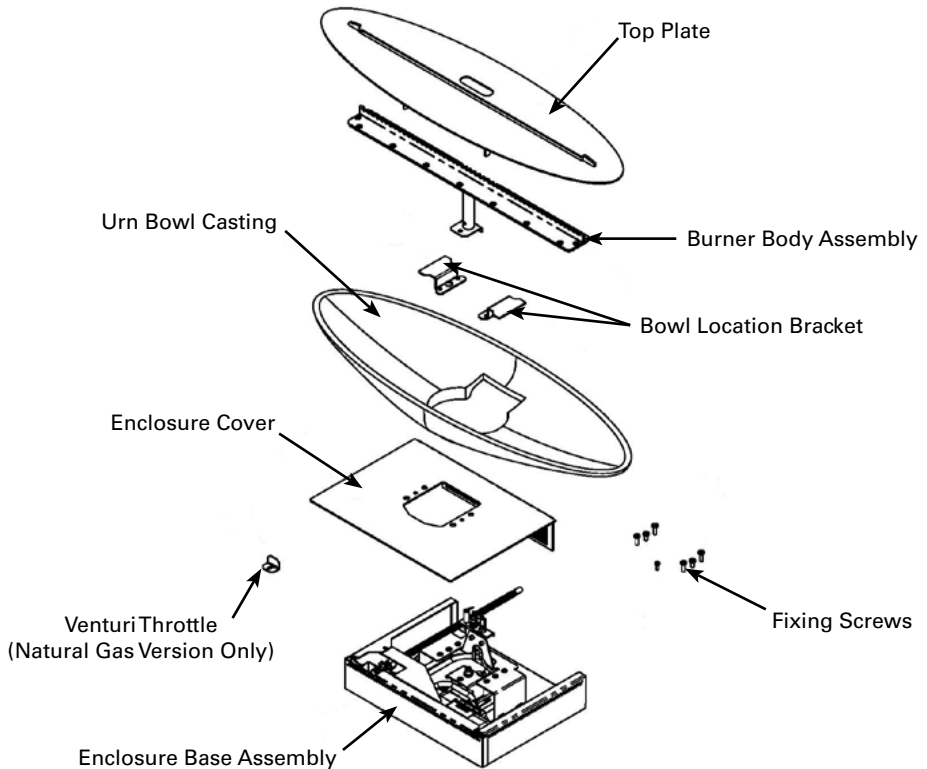
The installation should only be carried out by a competent person and all gas work must be carried out by a Gas Safe Registered Engineer in accordance with national and local regulations.

The installation must comply with local and national building regulations.

For the Republic of Ireland, reference should be made to IS813 and ICP3 and any guidance notes from Board Gais.

Failure to comply with the regulations nullifies ALL guarantees.

Unit Parts:



2. Technical Data

Gas Connection Size	8.0mm O.D. tubing
Minimum Flue Diameter (mm/Inches)	178.0 / 7.0
Minimum Flue Height	3
Appliance Mass (kilograms)	18.5

Gas Type	Gas Category, Type and Supply Pressure	Countries of Destination															
		AT	BE	BG	CH	CY	CZ	DE	DK	EE	ES	FI	FR	GB	GR	HU	HR
NG	I _{2H} - G20 at 20mbar	✓		✓	✓		✓		✓	✓	✓	✓		✓	✓		✓
	I _{2E} - G20 at 20mbar							✓									
	I _{2E+} - G20 G25 at 20/25mbar		✓										✓				
	I _{2ELL} - G25 at 20mbar							✓									
LPG	I _{3B/P(30)} - G30/G31 at 30mbar			✓	✓	✓			✓	✓		✓	✓	✓	✓	✓	✓
	I ₃₊ - G30/G31 at 30/37mbar		✓		✓	✓	✓				✓		✓	✓	✓		
	I _{3P(50)} - G31 at 50mbar	✓					✓	✓									
	I _{3P(37)} - G31 at 37mbar		✓		✓		✓					✓		✓	✓		✓
	I _{3P(30)} - G31 at 30mbar											✓					

Gas Type	Gas Category, Type and Supply Pressure	Countries of Destination														
		IE	IT	LT	LJ	LV	MT	NL	NO	PL	PT	RO	SE	SI	SK	TR
NG	I _{2H} - G20 at 20mbar	✓	✓	✓		✓			✓		✓	✓	✓	✓	✓	✓
	I _{2E} - G20 at 20mbar				✓				✓		✓					
	I _{2L} - G20 G25 at 25mbar							✓								
	II _{2E/2} - G25.3 at 25mbar <small>(43.46-46.3 MJ / m³ (10°C))</small>							✓								
LPG	I _{3B/P(30)} - G30/G31 at 30mbar		✓	✓			✓	✓	✓		✓	✓	✓	✓	✓	✓
	I ₃₊ - G30/G31 at 30/37mbar	✓	✓	✓						✓				✓	✓	✓
	I _{3P(50)} - G31 at 50mbar							✓							✓	
	I _{3P(37)} - G31 at 37mbar	✓	✓	✓				✓		✓	✓			✓	✓	✓
	I _{3P(30)} - G31 at 30mbar							✓			✓					

DFE URN								
Gas Type	Gas Category, Type and Supply Pressure	Heat Input Gross kW	Heat Input Nett kW	Gas Rate m ³ /h	Burner Pressure	Injector marking	Pilot Assembly	NOx Class
NG	I _{2H} - G20 at 20mbar	5.2	4.7	0.477	18.3	320	ERTA PG-82-330	5
	I _{2E} - G20 at 20mbar	5.2	4.7	0.477	18.3			
	I _{2E+} - G20/G25 at 20/25mbar	5.2	4.7	0.477/0.500	18.3/22.9			
	I _{2ELL} - G25 at 20mbar	4.2	3.8	0.454	18.6			
	I _{2L} - G25 at 25mbar	4.7	4.2	0.500	22.9			
	II - G25.3 at 25mbar <small>2E/2 (43.46-45.3 MJ / m³ (0°C))</small>	4.7	4.2	0.500	22.9			
LPG	I _{3B/P(30)} - G30/G31 at 30mbar	4.2	3.9	0.120	28	120	ERTA PG-82-350	5
	I ₃₊ - G30/G31 at 30/37mbar	3.8/4.2	3.5/3.9	0.120/0.130	28			
	I _{3P(50)} - G31 at 50mbar	4.2	3.9	0.153	36			
	I _{3P(37)} - G31 at 37mbar	4.2	3.9	0.153	36			
	I _{3P(30)} - G31 at 30mbar	3.8	3.5	0.130	28			

Recommended Opening Size		
Model	Height (mm)	Width (mm)
URN	600	700

NOTE- Other types of larger flue/openings size combinations (and canopies) can be used provided that the combustion products are cleared and there is no spillage. In if doubt contact a flue specialist

3. Installation Parameters

The fire unit must be installed and used in accordance with these instructions.

This appliance is for decorative purposes.

For your safety it is law that all gas appliances must be installed by a competent person, in accordance with the current Gas Safety regulations applicable in the country of use.

The installation must be carried out in accordance with the relevant local and national specifications and comply with building regulations.

The following must comply with the requirements and satisfy Building Regulations - Approved Document J.

- Builders opening and Fire Chamber must be constructed of non-combustible material
- Hearth and clearance dimensions
- The minimum flue opening is 178mm (7") diameter 250 sq. cm. (38.5 sq. inches) and a minimum height of 3m (10ft), provided the flue which serves this appliance.

An in-line fan that complies with BS 5440 Part 1 can be used to improve flue draught.

NOTE -The flue must not be shared with any other appliance.

Prior to installation, ensure the compliance of local distribution conditions (E.g. The type of gas, pressure and the adjustment of the appliance) are compatible.

The builder's opening or fireplace opening must be constructed of a non-combustible material.

Before the fire is installed, the chimney should be swept and a flue test in accordance with National Regulations should be carried out.

The flue must be fitted in accordance with National Regulations, damper plates or flue restrictors must be removed or fixed permanently in the fully open position.

The gas connection must be in accordance with National Regulations.

The pilot light and flame sensing system fitted to this fire is also an atmosphere sensing device, this is not adjustable and must not be put out of action. If the pilot light is damaged or faulty it should be replaced only with the original identical unit supplied by Chesney's Limited.

Appropriate ventilation to the room where the appliance is to be fitted must be in accordance with Local and National Regulations and must be checked on a regular basis to ensure there is no obstruction.

This appliance must not be fitted in any room where steam is present (e.g. Bathroom).

The appliance is not fitted with an integral guard. It is recommended that a guard be used for the protection of young children, the elderly or infirm and also for normal use conforming to BS8423 2002, such that access to the flame is minimised.

It is advised not to stand too close to the appliance for prolonged periods of time loose clothing is particularly at risk of burning due to the presence of an unguarded flame.

It is also advised against placing combustible materials directly in front of the appliance. Floor coverings, such as carpets, are considered to be acceptable.

Due to the newness of materials, the fire may give off a slight smell for a period of time after commissioning. This is quite normal and any odours should dissipate within a few hours of operation.

4. Installation

Check Flue Soundness

A smoke pellet can be used to test the flue for effectiveness of the draw, also checking other parts of the dwelling (including loft areas) for leakage, down-draught etc. If the flue is unsatisfactory seek advice from a flue specialist.

NOTE – The smoke pellet gives a fair idea on the draw, but is no guarantee that the products of combustion from the fire unit will clear, this is also to be tested after the installation by carrying a spillage test.

Below is a guide to the flue diameter and minimum flue heights for different size openings.

NOTE -This table is a rough guide, due to some complex flue systems in some dwellings the suggested table may still be inadequate, contact a flue specialist for more advice.

Opening Width (mm)	Opening Height (mm)	Opening Width x Height	Floor to flue top height / Flue Diameter				
			Height 3.0m	Height 4.5m	Height 6.0m	Height 9.0m	Height 15.0m
350	550	1925cm2	175 Dia.	175 Dia.	175 Dia.	175 Dia.	175 Dia.
400	550	2200cm2	175 Dia.	175 Dia.	175 Dia.	175 Dia.	175 Dia.
460	460	2116cm2	175 Dia.	175 Dia.	175 Dia.	175 Dia.	175 Dia.
460	550	2530cm2	200 Dia.	175 Dia.	175 Dia.	175 Dia.	175 Dia.
460	610	2806cm2	200 Dia.	200 Dia.	175 Dia.	175 Dia.	175 Dia.
610	460	2806cm2	200 Dia.	200 Dia.	175 Dia.	175 Dia.	175 Dia.
610	610	3721cm2	250 Dia.	225 Dia.	200 Dia.	200 Dia.	175 Dia.
610	760	4636cm2	300 Dia.	250 Dia.	250 Dia.	225 Dia.	200 Dia.
760	460	3496cm2	225 Dia.	225 Dia.	200 Dia.	200 Dia.	175 Dia.
760	610	4636cm2	250 Dia.	250 Dia.	250 Dia.	225 Dia.	200 Dia.
760	760	5776cm2	300 Dia.	300 Dia.	250 Dia.	250 Dia.	225 Dia.
760	910	6916cm2	350 Dia.	300 Dia.	300 Dia.	250 Dia.	250 Dia.
910	460	4186cm2	250 Dia.	225 Dia.	225 Dia.	200 Dia.	200 Dia.
910	610	5551cm2	300 Dia.	300 Dia.	250 Dia.	250 Dia.	225 Dia.
910	760	6916cm2	350 Dia.	300 Dia.	300 Dia.	250 Dia.	250 Dia.
910	910	8281cm2	350 Dia.	350 Dia.	300 Dia.	300 Dia.	250 Dia.
910	1070	9737cm2	*****	350 Dia.	350 Dia.	300 Dia.	300 Dia.
1070	460	4922cm2	300 Dia.	250 Dia.	250 Dia.	225 Dia.	200 Dia.
1070	610	6527cm2	300 Dia.	300 Dia.	300 Dia.	250 Dia.	250 Dia.
1070	760	8132cm2	350 Dia.	350 Dia.	300 Dia.	300 Dia.	250 Dia.
1070	910	9737cm2	*****	350 Dia.	350 Dia.	300 Dia.	300 Dia.
1070	1070	11449cm2	*****	*****	350 Dia.	350 Dia.	300 Dia.
1070	1220	13054cm2	*****	*****	*****	350 Dia.	350 Dia.
1220	460	5612cm2	300 Dia.	300 Dia.	250 Dia.	250 Dia.	225 Dia.
1220	610	7442cm2	350 Dia.	300 Dia.	300 Dia.	300 Dia.	250 Dia.
1220	760	9272cm2	*****	350 Dia.	350 Dia.	300 Dia.	300 Dia.
1220	910	11102cm2	*****	*****	350 Dia.	350 Dia.	300 Dia.
1220	1070	13054cm2	*****	*****	*****	350 Dia.	350 Dia.
1220	1220	14884cm2	*****	*****	*****	350 Dia.	350 Dia.
1520	460	6992cm2	300 Dia.	300 Dia.	300 Dia.	250 Dia.	250 Dia.
1520	610	9272cm2	*****	350 Dia.	350 Dia.	300 Dia.	300 Dia.
1520	760	11552cm2	*****	*****	350 Dia.	350 Dia.	300 Dia.
1520	910	13831cm2	*****	*****	*****	350 Dia.	350 Dia.
1520	1070	16264cm2	*****	*****	*****	*****	350 Dia.
1520	1220	18544cm2	*****	*****	*****	*****	*****

Check Ventilation

The appropriate size and type of ventilation into to the room where the appliance is to be fitted should also take into account any other gas appliances in the room and must comply with Local and National Regulations The ventilation should be checked on a regular basis to ensure there is no obstruction.

Fitting the fire unit

All Chesney's fire units have been tested to ensure safety.

The URN can be installed as a free standing unit.

IMPORTANT- Please check you have the correct model for your chosen installation as they differ in design.


Ensure that the gas supply is capable of delivering the required amount of gas, and is in accordance with the rules in force.

When laying the gas pipe work check the fire unit's gas inlet location to ensure a smooth run.

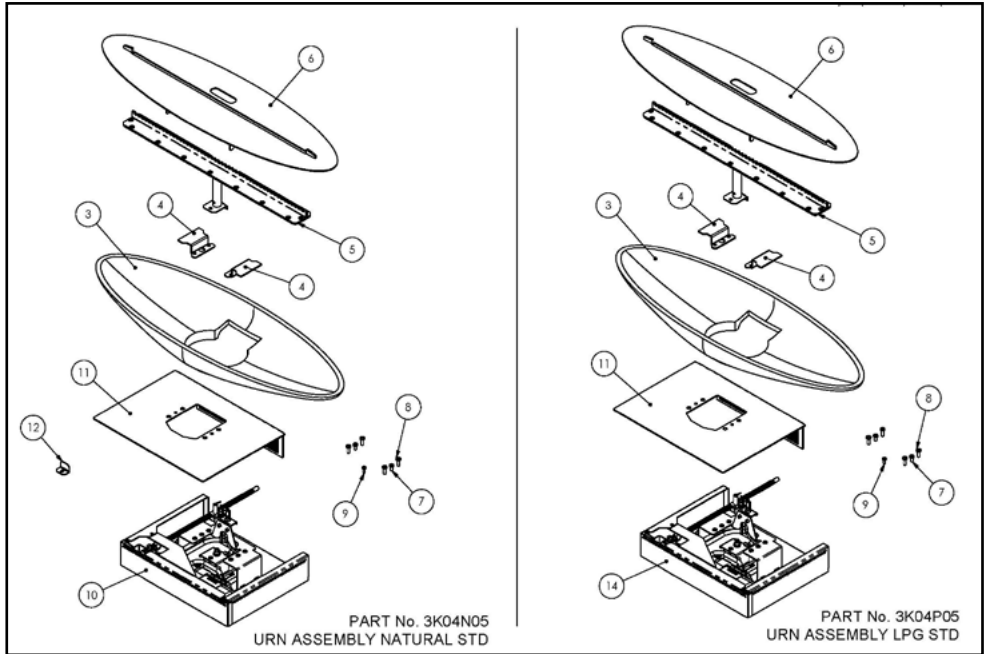
NOTE - All gas work must be carried out by a qualified gas installer to all relevant regulations.

An isolation valve or valves must be fitted adjacent to the appliance in accordance with national regulations this is to allow the complete removal of the burner control assembly, for maintenance or repair.

The Burner is fitted with a metal data plate supplied with the fire unit and is to remain with the fire unit for annual services.

THIS APPLIANCE MUST BE INSTALLED IN ACCORDANCE WITH THE RULES IN FORCE AND ONLY USED IN A SUFFICIENTLY VENTILATED SPACE. CONSULT INSTRUCTIONS BEFORE INSTALLATION AND USE OF THIS APPLIANCE.				
COUNTRIES OF DESTINATION AT, BE, BG, CH, CY, CZ, DE, DK, EE, ES, FI, FR, GB, GR, HR, IE, IT, LT, LU, LV, NL, NO, PL, PT, RO, SE, SI, SK, TR	CHESNEYS 194-204 Battersea Park Road, London, SW11 4ND Tel: 020 7627 1410 www.chesneys.co.uk			 0359-17
	URN DFE GAS FIRES			
GAS CATEGORY, TYPE AND SUPPLY PRESSURE (NATURAL GAS)	HEAT INPUT (GROSS) KW	HEAT INPUT (NETT) KW	GAS RATE M³/H	BURNER PRESSURE MBAR
I _{1s} , I _{1c} - G20 AT 20MBAR	5.2	4.7	0.477	18.3
I _{1s} - G20/G25 AT 20/25MBAR	5.2	4.7	0.477 / 0.50	18.3 / 22.9
I _{1H1} - G25 AT 20MBAR	4.2	3.8	0.454	18.6
I _{1c} - G25 AT 25MBAR	4.7	4.2	0.50	22.9
II - G25.3 AT 25MBAR <small>48.9, 49.48, 50.05, 50.62</small>	4.7	4.2	0.50	22.9
SERIAL NUMBER:		PIN: 0359CR1578		
SPILLAGE TEST TEST THE APPLIANCE FOR SPILLAGE AFTER AN INITIAL 10 MINUTES OF OPERATION ON A MAXIMUM RATE. INSERT A SMOKE MATCH 50MM IN AND 50MM DOWN FROM THE TOP OF THE FIREPLACE OPENING. IF SPILLAGE OCCURS TURN OFF THE APPLIANCE AND REFER TO THE INSTALLATION MANUAL.				

Standard Free Standing URN Natural Gas/LPG



Item	Part Description
1	Enclosure Base Assembly Concealed Urn LPG
2	Enclosure Cover Concealed Urn
3	Urn Bowl Casting
4	Bowl Location Bracket
5	Burner Body Assembly
6	Top Plate
7	M5 x 10mm Screws For Top Plate
8	M5 x 15mm Screws For Bowl Location Brackets
9	M4 x 10mm Screw For Burner Body Fixing
10	Enclosure Base Assembly Free Standing Urn Natural Gas
11	Enclosure Cover Free Standing Urn Natural Gas
12	Venture Throttle (Only On Natural Gas Version)
13	Enclosure Base Assembly Concealed Urn Natural Gas
14	Enclosure Base Assembly Free Standing Urn LPG

Fitting the Appliance:

Please make reference to the above table and diagrams.

1. Fit the enclosure (1,10,13,14) base in position.
2. Connect the main gas via the flexible gas inlet pipe at the rear of the enclosure base.
3. Carry out a gas soundness test; if satisfactory then continue with installation.
4. Fit the enclosure cover (2,11) using 2 x fixing screws (7).
5. The URN Bowl casting (4) can be positioned.
6. Fit the bowl location brackets and secure using 4 x fixing screws (8).
7. Fit the burner body assembly (5) over the injector in the enclosure base, ensure the two location lugs in the burner body assembly line up with the slots in injector plate. Secure using 1 x screw (9).
8. Fit the top plate (6) over the burner body assembly (5).

When fitting the fire ensure that the unit is fitted under the flue opening so that no part of the fire bowl protrudes beyond the fireplace opening.

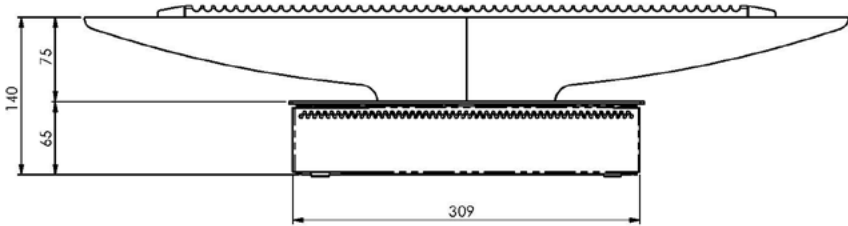
Before connecting the fire unit, purge the pipes from air and debris.

Light the fire on maximum and run for approximately 20 mins and check that the hot burner pressure is in accordance with the values stated on pages 4 and 5 within the appliance specifications section.

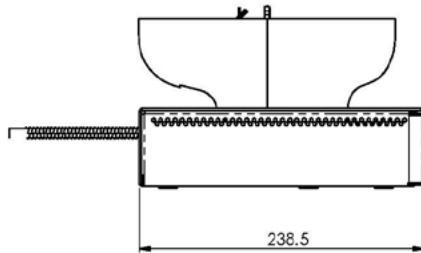
5. Burner Information

Standard Free Standing Urn Dimensions

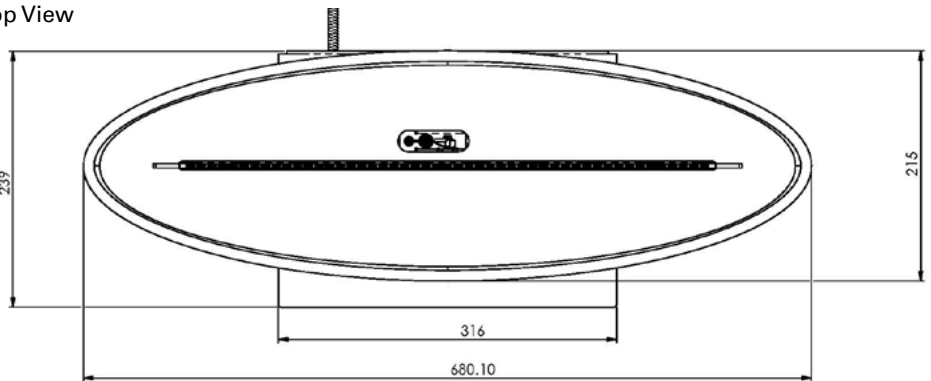
Front View



Side View

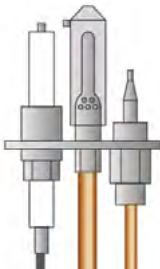
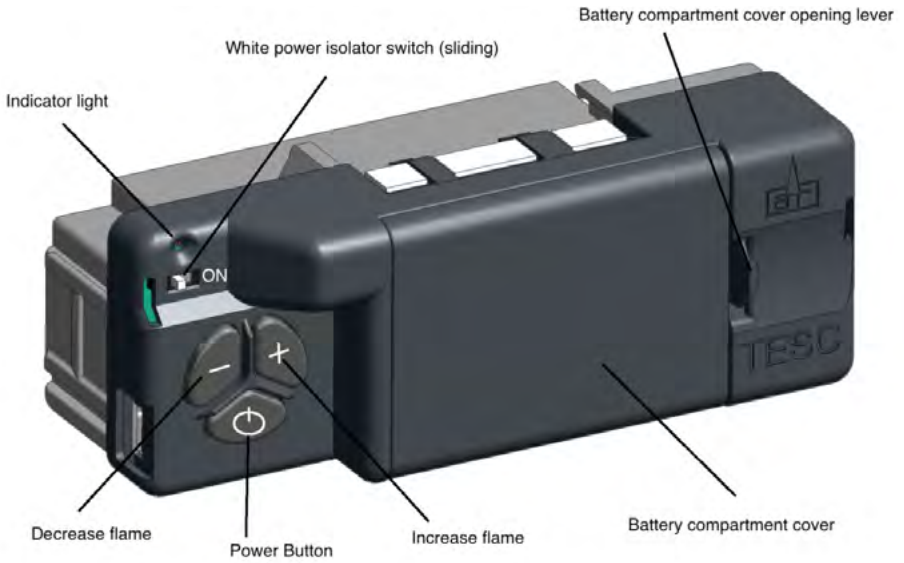


Top View



6. Burner Control Systems

1. THERMACO - THERMO ELECTRIC SAFETY CONTROL (TESC)



PILOT ASSEMBLY
NG/LPG



HANDSET RADIO FREQUENCY

7. Commissioning the Fire Unit

Turn on the gas supply

Check the gas supply and gas unit for soundness.

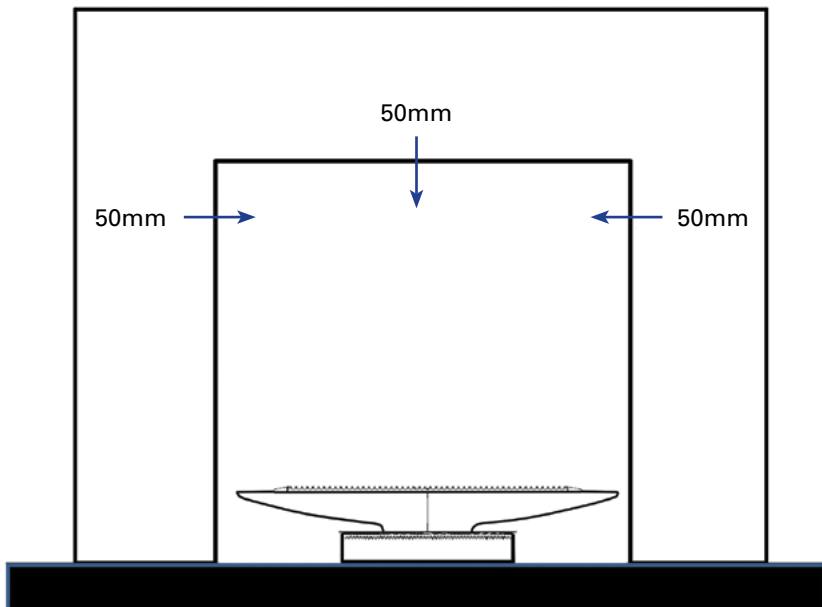
Light the appliance and check that all available functions work correctly. (See 'Lighting the appliance' in User Instructions for information).

Spillage checks

A spillage check must be done before the installed appliance is handed to the customer.

The appliance must be fully fitted, all doors and windows closed in the room in which the appliance is fitted. The appliance is to be tested after 5 minutes of the burn on maximum position.

Light a smoke match and position flush with the fireplace opening testing around the opening a minimum of 50mm from the sides and a maximum of 50mm from the top.



If the chimney is functioning correctly all smoke should be drawn into the chimney and out of the room.

If this does not happen, check after a further 5 minutes of burn time on high rate. If the smoke still does not expel all fumes then the unit is to be disconnected and expert advice taken.

8. Briefing & Handover to the Customer

Instruct the customer on the full operation of the appliance.

Warn the customer that the fire unit may give off a harmless and temporary odour this is normal running in of the unit and will disappear after a short period of use.

Inform the user that rubbish cannot be burned on the unit and not to disturb the fibre coals as this may disturb the combustion.

Inform the customer that it is recommended that a full service on the fire unit and flue checks be carried out annually by competent persons.

Instruct the customer that the pilot and flame sensing device fitted to the unit also acts as an atmospheric sensing device designed to shut off the appliance if the evacuation of the products of combustion is interrupted. If the appliance cuts off repeatedly then a qualified person is to be informed.

Warn the customer when cleaning the fire unit to use a small brush.

Warn the user that the appliance is not fitted with an integral guard.

In normal use consideration may be given to the use of a suitable guard conforming to BS8423 2002, such that access to the flame is minimised.

Also advise the user not to stand too close to the appliance for prolonged periods of time loose clothing is particularly at risk of burning due to the presence of an unguarded flame.

Advise the user against placing combustible material directly in front of the appliance. Floor coverings, such as carpets, are considered to be acceptable.

Ensure the installer details are filled in.

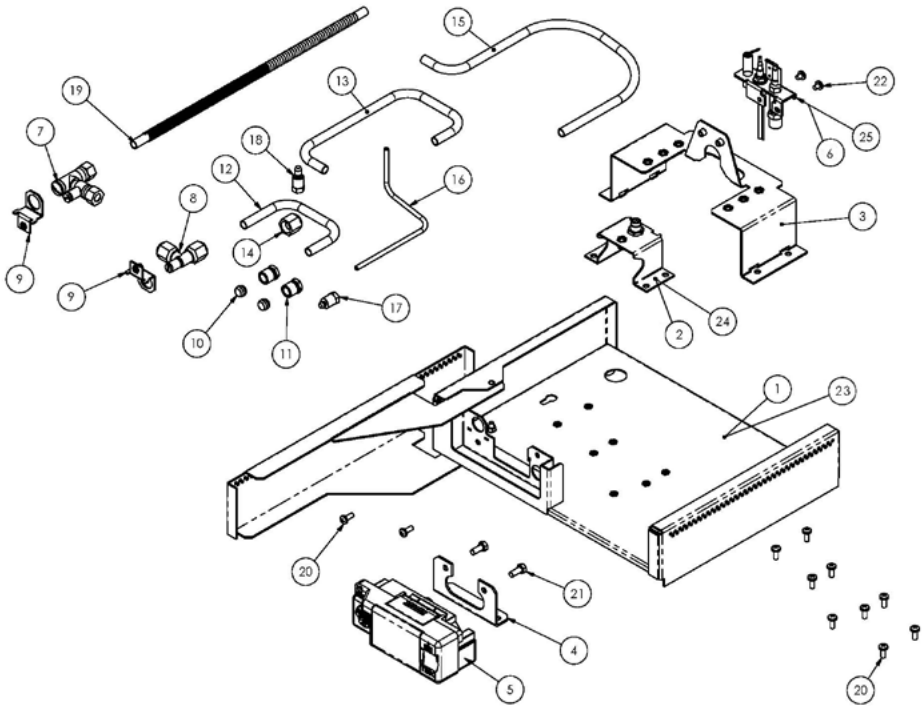
Handover the installation manual to the customer.

9. Servicing

It is advised that the appliance is serviced annually by a qualified person to Local and National Regulations.

All components replaced must be a genuine Chesneys component and only purchased via Chesneys.

Exchangeable Component Diagram



Exchangeable Component List

ITEM NUMBER	PART DESCRIPTION	PART NUMBER LPG
1	ENCLOSURE BASE ASSEMBLY STANDARD	3T04209
2	INJECTOR BRACKET ASSEMBLY LPG	3A04P77
3	ODS BRACKET SUB ASSEMBLY	3A04053
4	TESC01 MOUNT BRACKET	3G04771
5	TESC01 VCONTROL VALVE	7050401
6	PILOT ASSEMBLY LPG	PG-82-350
7	RESTRICTOR TEST POINT EBLOW	3G04080
8	PRESSURE TEST POINT ELBOW	YG14080
9	PRESSURE TEST POINT CLAMP	3A04180
10	8MM OLIVE	YG14681
11	NUT FOR 8MM OLIVE	G30-ZGH08A
12	BUNDYTUBE OUT	3G04481
13	BUNDYTUBE INJECTOR	3G0381
14	1/4 BSP NUT FOR 8MM PIPE	YG14181
15	BUNDYTUBE TESC IN	3G04581
16	PILOT BUNDYTUBE	3G04581
17	PILOT SHEAR OFF NUT	CC06278
18	PILOT SHEAR OFF NUT	CC06278
19	FLEXIBLE TUBE 8MM X 300MM	IG08030
20	M4 X 10MM MACHINE SCREW	FF00174
21	M5x0.80 X 12 HEX HEAD CAP SCREW	YF00112
22	M4 X 6 MACHINE SCREW	198-324
23	ENCLOSURE BAS ASSEMBLY CONCEALED	3T04509
24	INJECTOR BRACKET ASSEMBLY NATURAL GAS	3A04N77
25	PILOT ASSEMBLY NATURAL GAS	PG-82-330

Annual maintenance.

Safety precautions must be taken when cleaning the appliance.

Ensure the appliance is cool before carrying out an annual service.

Isolate the appliance and disconnect the unit.

Always test for gas soundness and spillage after refitting the appliance.

On the failure of pilot burner/ignition, or control valve have repairs carried out by a competent person.

Removal of Components

1. Isolate and disconnect the fire unit from the gas supply.
2. Remove the top plate by lifting out.
3. Undo the burner assembly securing screw and lift out the burner.
4. Remove the bowl brackets and remove, lift away the URN bowl.
5. Remove the enclosure cover to expose the control components.
6. Replace the required components and refit according to the instruction in the installation section.

Pilot Removal

If the pilot is to be exchanged ensure that the part to be fitted is a genuine like for like part.

Following the above instruction 1-5:

Undo and remove the thermocouple connection from the rear of the control valve.

Disconnect the spark lead and ground connection if fitted.

Undo and remove the 4mm gas supply pipe from the pilot and remove the 2 screws attaching the pilot to the burner.

Replace with the genuine part and refit in reverse order.

Check for gas soundness and commission the appliance

Control Valve Removal

If the Control valve is to be exchanged ensure that the part to be fitted is a genuine like for like part.

NOTE -The valve must be purchased from a Chesney's supplier as the valve needs to be set.

Following the above instruction 1-5:

Disconnect the main 8mm gas supply pipe and the injector pipe from the control valve.

Disconnect the 4mm pilot supply pipe from the rear of the control valve.

Remove the thermocouple connection from the rear of the control valve, disconnect the spark lead and the ground connection if fitted from the rear of the control valve.

Remove the control valve from the housing by undoing the fixing securing screws.

Replace and refit in the reverse order.

Check for gas soundness and commission the appliance.

10. Fault Finding

For all control systems

Symptom	Check List
Unit does not respond.	Check remote is working properly.
	Check battery power supply.
	Check wiring is correct.
	Check main switch is in the on position.
Handset does not work.	Check battery power.
	Check handset is in range (wifi symbol displayed on handset).
	Ensure the handset is paired.
Unit starts but no spark or weak spark.	Check spark lead is connected properly.
	Check spark electrode is in the correct area and the gap correctly distanced.
	Check spark lead is not arcing on other parts of the appliance
Unit sparks but does not light pilot.	Check for a good spark.
	Check the spark is in the correct area.
	Check if the ventilation is not too strong.
	Check if there is gas running through.
If there is no gas.	Check isolation tap/shut off valves are free from grease.
	Check isolation tap/shut off valve/s are on.
	Check for blockages.
If there is gas but pilot does not light.	Check pressure is correct.
	Check for blockages.
	Check for draughts.
	Check the pilot gas slots are clear.
	Check for a clear spark.
Pilot lights but does not light main burner.	Check the pilot flame is heating the thermocouple.
	Check ventilation is not too strong.
	Check ventilation is not too strong and the flame is not blowing off the thermocouple and flame rectification probe.
	Check gas pressure is correct.
	Check pilot and burner flame stability.
Burner lights but turns off within a short period.	Check ventilation is not too strong and the flame is not blowing off the thermocouple and flame rectification probe.
	Check gas pressure is correct.
	Check pilot and burner flame stability.

TESC CONTROL FAULT CODES		
FAULT CODE	DESCRIPTION OF FAULT	ACTION TO TAKE
E00	TESC locked.	Unlock the handset.
E01	Low current from thermocouple.	Reset.
E02	Too high ambient temperature.	Allow appliance to cool before relighting.
E03	Thermocouple not connected or bad connection.	Check all connections and rectify.
E04	Flame signal after burner shutdown.	Reset.
E05	Flame signal before burner has started.	Reset.
E06	Too low voltage on power supply to start the burner.	Replace the batteries in control valve.

11. User Instructions

General

The flue must be fitted in accordance with National Regulations, damper plates or flue restrictors must be removed or fixed permanently in the fully open position.

The chimney should be swept before the appliance is installed.

The flue must not be shared with any other appliance.

After installation the chimney should be regularly swept and inspected, to check that all of the combustion products are entering the flue and that there is no build up of soot.

It is highly recommended that a full service on the fire unit including flue checks be carried out annually by competent persons.

The gas connection must be in accordance with National Regulations.

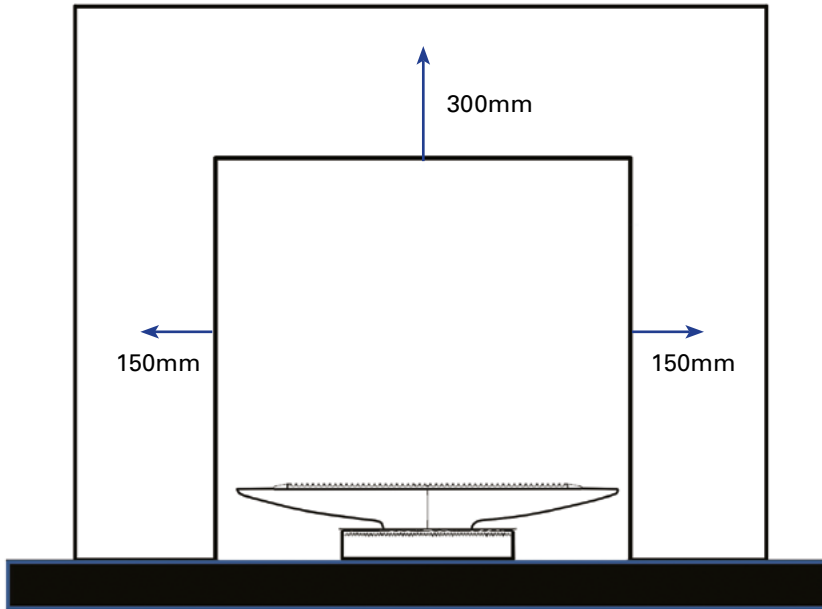
Installation and servicing must be carried out by a competent person in line with relevant regulations.

This appliance is intended for decorative purposes. Any purpose-provided ventilation should be checked regularly to ensure that it is free from obstruction.

The appliance is not fitted with an integral guard. It is recommended that a guard be used for the protection of young children, the elderly or infirm and also for normal use conforming to BS8423 2002, such that access to the flame is minimized.

If the fire malfunctions or develops a fault please contact the installer/retailer for assistance.

Ensure curtains and soft furnishings are not positioned above the fire opening with at least a clearance of at least 300mm above and 150mm on either side of the fire opening.



Do not throw rubbish upon the surface area or otherwise disturb the fuel bed. Debris from any source, or soot formed, should be removed from time to time.

The pilot light and flame sensing device fitted to this fire is also an atmosphere sensing device, which shuts off both the main burner and pilot if evacuation of the combustion products is interrupted. If the fire is extinguished or goes out in use, allow 3 minutes before attempting to relight.

If the fire shuts itself off repeatedly, do not use the fire, and have the flue and fire checked by a suitably qualified person.

The appropriate size and type of ventilation into to the room where the appliance is to be fitted should also take into account any other gas appliances in the room and must comply with Local and National Regulations.

The ventilation should be checked on a regular basis to ensure there is no obstruction.

TESC Control

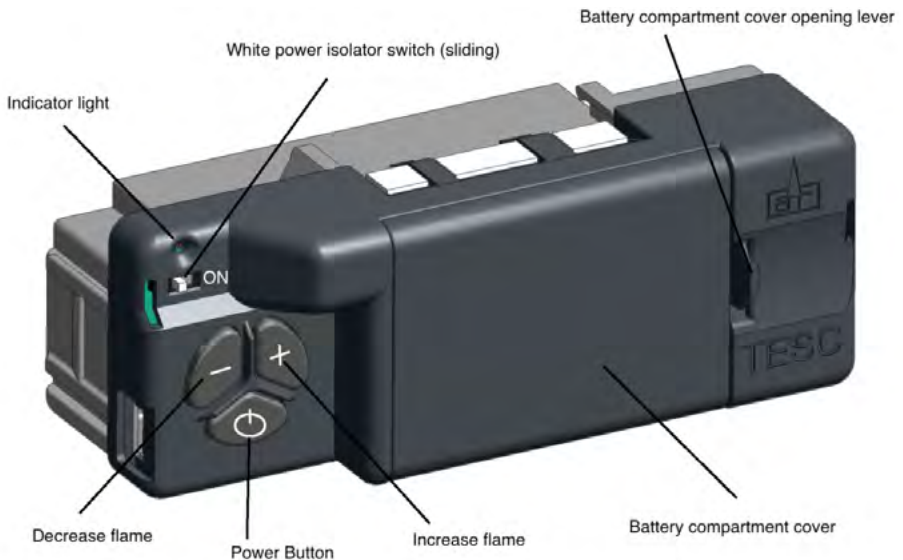
Control System Information TESC

The appliance is fitted with the Thermo Electric Safety Control (TESC). The system operates on radio frequency and has a remote control handset.

The gas control has an automatic ignition system, therefore does not have a standing pilot.

The control required 3 AA size alkaline batteries to be inserted under the battery compartment cover.

The handset and control device has been paired up and is ready to use.



Handset

Ensure the power isolator switch on the front of Fire Control is in the on position I.

NOTE: For safety reasons a button must be pressed and released for the command to be recognized. Keeping hold of a button when pressing (unless otherwise instructed) will not be recognized as a command.

To operate the handset it must be held in your hand so always ensure you have a good grip around the handset to unlock its functions.

The green unlock light will illuminate to show when the handset is unlocked and ready to accept commands.

This operation must be performed each time you want to operate the handset.

Handset function and display



Lighting the appliance

Important –To operate the handset it must always be unlocked, this is carried out by firmly holding the handset in one hand, which will allow operation of all functions.

Step 1: Unlock the handset by holding it.

The green unlock light will illuminate. Keep the handset held to keep the control unlocked, to enable operation of the buttons.

Step 2: With the other hand press the power button for about 3 seconds until:

A short acoustic beep will be heard and the unlock light on will flash, the word “pilot” will appear at the bottom left hand corner of the display screen. At this point release the power button.

Step 3: The Fire should be lit within a few seconds, if it fails to light then repeat the process.

Adjusting the flame height

Step 1: Unlock the handset by holding it.

Step 2: Press the “+” button to increase the flame height, press the “-” button to decrease the flame height

Turning off appliance

Step 1: Unlock the handset by holding it.

Step 2: Press and release the power button, this will turn off both the main burner and pilot burner.

Restarting the Appliance

If the fire is extinguished or goes out in use, allow 5 minutes before attempting to restart following the lighting sequence.

If the fire shuts itself off repeatedly, do not use the fire, and have the flue and fire checked by a suitably qualified person.

If the appliance is not lighting after 4 ignition attempts, close the gas tap and call the installer.

Close the gas tap in case of malfunctions and/or poor operation and warn the installer.

The appliance is designed to display a fault code on the handset in the event of a functional failure, this can be identified from the fault finding section.

Additional control functions

In addition, the remote control can also be used to set a number of additional functions:

- Time and date
- Temperature display in degrees Celsius or Fahrenheit
- Snooze mode
- Thermostat function

Caution - Although highly improbable, we cannot rule out that your appliance's ignition process can be started unintentionally through other remote controls. For example the remote control of your neighbours' gas heater, but also car keys and garage door openers. The result will be that your appliance will burn when you do not want it to.

Unintended ignition of your appliance could be solved or prevented by turning the ON/OFF switch or closing the gas tap near your appliance. This is the safest precaution if the appliance is not in use for long periods to turn the ON/OFF switch to the OFF position and to close the gas tap near your appliance.

Setting the time

Enter the SETUP menu. Hold the handset to unlock the keypad and keep held throughout the following steps.

Press and hold SET for several seconds. The symbol in the top centre will flash. Press and release the "mode" button several times until the word "SETUP" appears flashing in the top right corner of the display.

Press and release "set" again to enter the "SETUP" menu.

Here you can change the clock from 12 hour or 24 hour format, the day of the week, hour of the day, minute of the day and the display in Celsius or Fahrenheit.

To navigate through the menu "SET" moves to the next parameter and "Mode" move back to the previous parameter. "+" and "-" change the display parameter.

Setting the display for 12 or 24 Hour display:

The H indicates that it is time to set the timer to either 24 hour display or 12 Hour (AM or PM) display. Press the "+" or "-" button on the handset to toggle between the two settings. When you are ready to confirm the setting you want press the "SET" button to progress to setting the day of the week.

Setting the day of the week

Press and release the “+” and “-” buttons until the correct day of the week is shown on the display.

(Mo = Monday, Tu = Tuesday, We = Wednesday, Th = Thursday, Fr = Friday,
Sa = Saturday and Su = Sunday).

Press “SET” to accept the day of the week and to progress to setting the Hour of the day.

Note: Whilst doing this setup pressing “SET” advances to the next display and pressing “MODE” will return you to the previous display setting.

Setting the Hour

Press and release the “+” or “-” button to change the hour to the correct hour and press set to store and to move to setting the minute.

Repeat this for setting the minutes.

Setting the temperature display to Celsius or Fahrenheit.

Press and release the “+” or “-” button to toggle between C and F. When the display shows the desired symbol, press and release the “SET” button to store.

As the important settings above have now been done, press and hold for a few seconds the “SET” button for a few seconds and this will exit the setup menu.

Snooze mode

Snooze mode is a time period you can set which will turn off the fire after a certain time period has elapsed. This function can be utilized during both the manual and thermostatic modes.

The snooze time period can be set before or during manual operation of the fire. Hold the handset to unlock as described previously and press the mode button as many times as necessary until the word MAN and the Zzz symbols are flashing at the top of the display. Press and release the set button and this will put the control into Manual snooze mode.

The default time period for the snooze time period is 1:00 hour. Pressing the set button again will show you the snooze time period remaining. This can be adjusted by pressing the “+” or “-” buttons. The timer period that can be set is from 1 minute to 4:00 hours.

After adjusting the time, press set again to enter the time setting required (or if left for a few seconds this time is now stored and used).

Once this countdown timer has reached zero the fire will turn off.

Thermostatic mode

The handset has within it a thermostat sensor and this can be set so the fire will heat the room to match the temperature set in the handset.

There are 2 temperature types that can be set:

- Day mode temperature that has a sun symbol on the display
- the default temperature is 24 degrees Celsius.
- Night temperature that has a half moon symbol on the display
- the default temperature setting is 18 degrees Celsius.

Hold handset and press and release the mode button several times as necessary until the display has a thermometer symbol flashing at the top of the display. Press the set button to enter this mode.

Press the set button again to see the temperature setting that is set and the mode and on the left of the display is a sun symbol showing it's the day temperature.

If a different set temperature is required, while the display is showing this set temperature press the "+" and "-" buttons to alter the setting. When finished either press set or leave and after a few seconds the new setting will be accepted and the display will return to the time of day screen.

The fire will automatically turn to high or low rate depending on the set temperature. When the set temperature is reached while the fire is in operation, the fire reduces the burner power level each minute until the burner is off. The pilot will remain on for a further 30 minutes and if the set temperature is still too high, the pilot will then also extinguish.

NOTE: If at any time the power button is operated during Thermostat mode, the control will cancel any thermostat operation and return the control to manual mode.

Changing the batteries

The batteries should be replaced on an annual basis with quality Alkaline AA batteries.

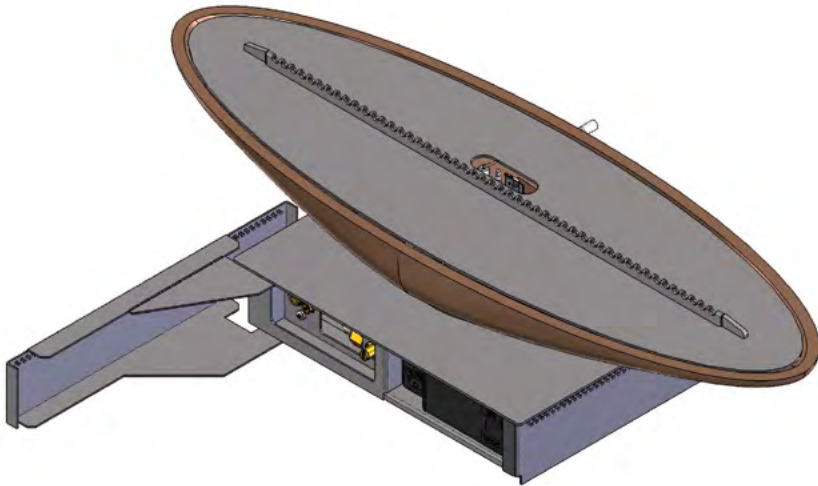
Handset:

The handset requires 2 x AA batteries, these can be replaced by removing the cover at the rear of the handset.

Appliance:

IMPORTANT- make sure the fire is turned off and is allowed to cool down before attempting to handle it, as the appliance will become very hot during operation.

The TESC control valve batteries can be replaced by accessing the door on the base enclosure assembly. Remove the battery cover on the TESC control valve and replace batteries and cover, then the door of the appliance can be closed.



Cleaning

Cleaning should only be carried out when the fire is turned off and cold.

If it is necessary to clean the fire a soft brush is advised to clean the burner unit.

Note-The bowl casting will patinate (mellow) over a period of time, this can be cleaned with a suitable metal polish cleaner if a high reflection is preferred.

This appliance is manufactured by -

Chesney's Limited
194 - 200 Battersea Park Road,
London, SW11 4ND
Tel: 020 7627 1410 Fax: 020 7622 1078

12. Installer Check List

FLUE CHECKLIST	PASS	FAIL
Flue size		
Flow test		
Spillage test		

GAS CHECKLIST	PASS	FAIL
Soundness		
Standing pressure		
Working pressure		

VENTILATION	PASS	FAIL
Ventilation requirements for appliance		

13. Dealer and Installer Information

Dealer
Contact No.
Date of Purchase
Model
Serial No.
Appliance Gas Type

Installation Company
Contact No.
Date of Installation
Company Gas Safe No.
Gas Safe Registered Engineer

14. Annual Service Record

Annual Service Record Year 1
Gas Safe Engineer:
Contact No.:
Gas Safe No.:
Date of Service:

Annual Service Record Year 2
Gas Safe Engineer:
Contact No.:
Gas Safe No.:
Date of Service:

Annual Service Record Year 3
Gas Safe Engineer:
Contact No.:
Gas Safe No.:
Date of Service:

Annual Service Record Year 4
Gas Safe Engineer:
Contact No.:
Gas Safe No.:
Date of Service:

Annual Service Record
Year 5
Gas Safe Engineer:
Contact No.:
Gas Safe No.:
Date of Service:

Annual Service Record
Year 6
Gas Safe Engineer:
Contact No.:
Gas Safe No.:
Date of Service:

Annual Service Record
Year 7
Gas Safe Engineer:
Contact No.:
Gas Safe No.:
Date of Service:

Annual Service Record
Year 8
Gas Safe Engineer:
Contact No.:
Gas Safe No.:
Date of Service:

The following information supplied in this manual is correct at the time of publish;
Date of last manual update April 2017

15. Chesneys Warranty

Information

Warranty Term

Chesneys provide a 12 months warranty on all gas appliances purchased through our retailers.

Procedure

To validate and start your 12 months warranty please fill out the form below and send it back to:

WARRANTY REGISTRATION
CHESNEYS LTD
194 BATTERSEA PARK ROAD
LONDON
SW11 4ND

Alternatively log on to:

<https://secure.chesneys.co.uk/warranty/registration.asp> and complete the online form.

In the event of a breakdown or claim you are required to contact the installer/dealer. They will need to investigate the matter and process the claim on your behalf if required.

Chesney's Warranty Registration Form

All items are required:

YOUR DETAILS	
NAME	
ADDRESS	
POSTCODE	
EMAIL ADDRESS	

PURCHASE DETAILS	
PURCHASED FROM	
PURCHASE DATE	

PRODUCT DETAILS	
APPLIANCE NAME	
BOWL TYPE	
SERIAL NUMBER	
GASTYPE	



