

# CHESNEYS

ALCHEMY EVOLUTION *PLUS* GAS FIRE

by



Unit 4, Kimpton Trade & Business Centre  
Minden Road, Sutton, Surrey SM3 9PF  
Tel: 020 8254 6802

## IMPORTANT NOTE

Simulated coals, or simulated logs, together with simulated black bark, are supplied with this appliance. These are all manufactured from refractory fibre. Do not use real coals, logs or bark, as this is dangerous. If the simulated coals, simulated logs or simulated black bark need renewing please obtain suitable replacements from your stockist.

# USE & MAINTENANCE INSTRUCTIONS

## FOR CHESNEYS ALCHEMY EVOLUTION *PLUS* GAS FIRES

### (NATURAL GAS ONLY)

### FOR DECORATIVE PURPOSES ONLY

NATURAL GAS MODELS: N2, N2I, N3R, N3I, N5R & N5

### Important

**A Carbon Monoxide Alarm Complying With BS EN 50201 Must Be Provided In The Room Where The Gas Fire Is Installed.**

**It Must Be Fitted And Maintained In Line With The Manufacturer's Instructions.**

### GENERAL

- This fire must be installed by a properly qualified (in accordance with National & Local Regulations) Installation Engineer.
- The connection of this appliance, and ventilation requirements (if any) are to be according to National & Local Codes.
- The chimney should be swept before the appliance is installed.
- Open fires are a hazard; it is recommended that a guard be fitted to provide protection for children, the elderly or infirm. (See National & Local Regulations if any.)
- This appliance is intended for decorative purposes only.
- Do not throw rubbish on, or attempt to burn any materials on this appliance. Any debris or foreign matter must be removed from the fire.
- The appliance should be serviced by a qualified gas fitter every 12 months.

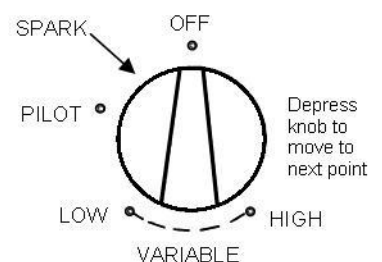
### IMPORTANT NOTES

- This appliance is fitted with an oxygen depletion sensing system, which automatically shuts off the gas supply to the main burner if the oxygen level in the room is depleted, due to a lack of primary air, or obstructed flue that would lead to incomplete combustion of the gas.
- In the event that the fire shuts down due to any reason, attempt to restart it. If there is a continuing problem call in a properly qualified specialist engineer.
- There are no user replaceable parts in this appliance.
- Do not change the fire front or fret supplied without checking with the supplier of this unit. A minimum primary air inlet area of 50 sq. cm is required for the safe and efficient operation of the fire. Failure to observe this instruction is potentially dangerous and will possibly invalidate the guarantee.**
- Regularly inspect the purpose provided ventilator (if fitted) to check that it is free from any obstruction.
- The chimney should be regularly checked to ensure that all the products of combustion are entering the flue & that there is no build-up of soot. If there is, the appliance must be cleaned.

### MANUAL CONTROL

#### LIGHTING & CONTROLLING THE FIRE

- Turning pilot on from off position depress knob and turn anti-clockwise until it sparks. More than one attempt may be required to light the pilot. Once lit hold in for about 10 seconds. Release knob and turn to pilot position.
- To turn burner on from pilot position depress knob and turn anti-clockwise to low flame. To go to high flame depress knob again and turn anti-clockwise as far as it will go. The flame can be varied to any point between high and low as desired.
- To turn off depress knob and turn clockwise depressing knob at each point as you go all the way round to off.



# MERTIK THERMATRONIC REMOTE CONTROL SYSTEM (MERTIK MAXITROL) LIGHTING & CONTROLLING THE FIRE

## General

The Mertik Thermatronic Control System is a battery-operated gas fire control system that uses a microprocessor to provide the working sequences needed by the fire, and when used with an oxy-pilot has all the safety features required by law and CE approval.

Commands are accepted by the microprocessor when buttons are pressed. An audible beep means that the command is received, and the push button should immediately be released.

## Using The System

Control can only be achieved if the transmitter/handset is pointed at the fire. The red light will flash each time you press a button on the handset.

### a. Ignition

Simultaneously press and hold the red button and the right upper button (linked by line) until a short acoustic signal confirms that the sequence has begun, then release the buttons. Continuous audible signals confirm that ignition is in progress. When pilot ignition is confirmed the motor will open the valve to maximum flame height – this takes about 30 seconds.

### b. Flame Height Adjustment

Press the small flame button until the flame height is at the desired position. If you try to go beyond the preset low flame minimum height the main burner will turn off leaving the pilot burner alight (this is the standby position). You will learn from experience the preset low flame minimum height.

To relight the fire from the standby position, or to increase the flame height from low flame, press and hold the large flame button until the desired flame height is achieved. Please note that you can have the flame height anywhere between maximum and preset low. For fine adjustment simply tap the up or down arrows.

### c. To Switch Off

Press the red/off button on the handset.

### d. General

Battery replacement is recommended at the beginning of each heating season, or when an acoustic error message sounds during ignition.

Error Message – Long signals (0.8 second tone – 0.2 second break) during ignition – probable cause - batteries in receiver are nearly discharged.

Error Message – 5 second continuous tone – probable cause – cable disconnected or on/off switch on valve is in off position.

Batteries            Receiver Box - 4 x AA good quality alkaline

                          Handset – 1 x PP3 good quality alkaline

To change the Handset Batteries slide open the plastic panel on the back of the Handset.

To change the Receiver Batteries locate the receiver box, slide open the plastic cover to gain access to the battery compartment. Always reposition the Receiver back in its original position.



## Resetting the Mertik Thermatronic Logic Circuits (Radio Frequency Control)

### BASIC RESET

It sometimes happens that (such as when the handset buttons are pressed out of sequence) the fire stops working because the logic circuits get confused and need to be reset. To do this, simply remove the 4 x AA batteries from the Receiver Box (do not use metal tools to do this), wait for 1 minute and then refit the batteries. Wait for another minute and then point the handset at the fire and press the red/off button. Wait for another minute and then start the fire as normal. If the fire does not start repeat the resetting procedure. If the fire still does not work a Full Reset can be tried (see below).

Note: If an extended battery box has been supplied, and the lead has been unclipped from the battery box, do not let the lead terminals touch any metal parts, because voltage is still stored in the capacitors, which can cause a short circuit.

### FULL RESET – TO BE USED IF A REPLACEMENT HANDSET IS OBTAINED

**NOTE. On some burners such as the Fireboxx and “sunken” burners it is not possible for the user to access the Receiver Box to carry out a Full Reset. If the user cannot access the reset button on the Receiver Box a Qualified Installation Engineer will need to remove the burner to do so and this will involve disconnecting the burner from the gas supply.**

If you obtain a new handset the control system will need to learn the handset's unique code via a Full Reset. Also, if the fire is not working and the Basic Reset (described above) has not worked a Full Reset can be carried out:

- a. Replace the batteries in the Receiver and Handset.
- b. Locate the Reset Hole on the side of the Receiver and using a pen press and hold in the Reset button until you hear two beeps. The first beep is short and the second beep is long. After the second beep release the Reset Button.
- c. Now on the Handset, within the next 20 seconds press the Small Flame Button until you hear two additional short beeps confirming the code is set in the Receiver.
- d. If you hear one long beep the Code as not been set so repeat the procedure.
- e. If the fire still does not work, the problem lies elsewhere.

Note: If an extended battery box has been supplied, and the lead has been unclipped from the battery box, do not let the lead terminals touch any metal parts, because voltage is still stored in the capacitors, which can cause a short circuit.

### CLEANING THE FIRE

- a. Do not use a vacuum cleaner to clean the appliance as you will suck up the vermiculite.
- b. Gently remove the Embaglow material & fuel effect pieces one by one. Remove soot deposits with a soft brush.
- c. **The vermiculite granules should be level with the top edge of the burner tray. Top up the vermiculite granules if required. Ensure that vermiculite granules are not obstructing the burner slots or fouling the pilot burner assembly.**
- d. **Re-lay the fuel effect as shown on the relevant drawing. Do not add more simulated coals, logs or black bark pieces or change the firebed layout in anyway.**

## Additional Important Installation Notes For The Remote Control Thermatronic Control System

### Temperature Limits of Electronic Components

It absolutely necessary to ensure that the electronic control system components temperature do not rise above 60°C.

It is also very important to ensure that the fire is not subjected to intermittent flue downdraught, which can blow flames/gas down to the underside of the burner and cause overheating of the electronics.

### Batteries

If using the extended battery box ensure that any batteries are removed from the electronics box battery compartment. This battery box is available as an optional extra for other installations, if required. Also available as an optional extra is a mains adaptor to be used instead of batteries, which again has a long lead which plugs into the socket on the standard electronics/battery box. **IMPORTANT – BATTERIES MUST BE REMOVED BEFORE USING THE ADAPTOR.**

### Dampness

All electronic equipment is sensitive to dampness and high humidity. The Thermatronic equipment must be installed in a completely dry place that does not access directly to outside air. If the fireplace has recently been rendered it must be allowed to completely dry out before the electronic equipment is installed. It is possible that dampness has occurred during storage of the appliance, so as a precaution we suggest placing the electronic box in a warm dry place for a while before installation.



**RECORD DATA TO BE COMPLETED & KEPT BY USER:**

PLACE OF PURCHASE ..... DATE .....

ADDRESS & TEL. NO. ....

.....

.....

APPLIANCE SERIAL NO. ....

INSTALLED BY ..... GAS SAFE. NO .....

**INSTALLATION & SERVICING INSTRUCTIONS**  
**FOR CHESNEYS ALCHEMY EVOLUTION *PLUS* GAS FIRES**  
**(NATURAL GAS ONLY)**  
**FOR DECORATIVE PURPOSES ONLY**

NATURAL GAS MODELS: N2, N2I, N3R, N3I, N5R & N5

***THIS APPLIANCE MUST BE INSTALLED & SERVICED BY A PROPERLY QUALIFIED  
(IN ACCORDANCE WITH LOCAL & NATIONAL CODES) INSTALLATION ENGINEER.***

**IMPORTANT:**

BEFORE PROCEEDING WITH THE INSTALLATION READ THESE INSTRUCTIONS CAREFULLY. THESE INSTRUCTIONS SHOULD BE KEPT IN A SAFE PLACE FOR FUTURE REFERENCE AND SERVICING DETAILS.

PRIOR TO INSTALLATION ENSURE THAT THE GAS TYPE AND PRESSURE ARE AS STATED ON THE APPLIANCE DATA PLATE.

SIMULATED COALS, OR SIMULATED LOGS, TOGETHER WITH SIMULATED BLACK BARK, ARE SUPPLIED WITH THIS APPLIANCE. DO NOT USE REAL COALS, LOGS OR BARK, AS THIS IS DANGEROUS. IF THE SIMULATED COALS, SIMULATED LOGS OR SIMULATED BLACK BARK NEED RENEWING PLEASE OBTAIN SUITABLE REPLACEMENTS FROM YOUR STOCKIST.

**APPLIANCE DATA**

GAS TYPE: SEE DATA PLATE.

BURNER: NU-FLAME EVOLUTION *PLUS* STAINLESS STEEL

FLAME SAFETY: OXYGEN DEPLETION & FLAME FAILURE DEVICE STANDARD TO ALL MODELS.

APPLIANCE INLET WORKING PRESSURE: SEE DATA PLATE.

IGNITION: PIEZO.

INLET CONNECTION: 8MM COMPRESSION FITTING.

NET HEAT INPUT: SEE DATA PLATE.

### **Natural Gas Models (For G20 Gas) – Manual Control (M)**

#### **ALCHEMY**

<b>Burner Model</b>	<b>Flue Classes</b>	<b>Category</b>	<b>Gas</b>	<b>Injector Size</b>	<b>kW Input Net (High Flame)</b>	<b>Burner Pressure (High Flame)</b>
N2	Classes 1 & 2	I2H	G20	510	6.9	16.5 mbar
N2I	Class 1 Only	I2H	G20	750	9.9	14.7 mbar
N3R	Classes 1 & 2	I2H	G20	510	6.9	16.5 mbar
N3I	Class 1 Only	I2H	G20	1050	11	12.0 mbar
N5R	Classes 1 & 2	I2H	G20	510	6.9	16.5 mbar
N5	Class 1 Only	I2H	G20	1000	10.5	11.2 mbar

### **Natural Gas Models (For G20 Gas) – Remote Control (RF)**

#### **Mertik Thermatronic**

#### **ALCHEMY**

<b>Burner Model</b>	<b>Flue Classes</b>	<b>Category</b>	<b>Gas</b>	<b>Injector Size</b>	<b>kW Input Net (High Flame)</b>	<b>Burner Pressure (High Flame)</b>
N2	Classes 1 & 2	I2H	G20	650	6.9	9.2 mbar
N2I	Class 1 Only	I2H	G20	1200	9.9	7.0 mbar
N3R	Classes 1 & 2	I2H	G20	650	6.9	9.7 mbar
N3I	Class 1 Only	I2H	G20	1500	11	5.6 mbar
N5R	Classes 1 & 2	I2H	G20	650	6.9	8.8 mbar
N5	Class 1 Only	I2H	G20	1200	10.5	7.7 mbar

#### **FLUE REQUIREMENTS**

- Ensure that the builders opening, flue & hearth for the appliance are constructed from non-combustible materials, and conform to National Regulations and Local Codes.  
Models with a 6.9kW input net or less require a minimum flue diameter of 125mm or equivalent area (Class 2) subject to proper clearing of products of combustion i.e. no spillage.  
**Models over 6.9kW input net require a minimum flue diameter 175mm or equivalent area (Class 1) subject to proper clearing of products of combustion i.e. no spillage.**
- Ensure that there is a smooth tapered transition from the fireplace opening to the flue. To achieve this a gather unit might need to be fitted, especially if a flue liner has been installed.
- The flue **MUST** be free of any obstructions. Any dampers or restrictors **MUST** be removed. Some dampers are impractical to remove; therefore they must be fixed in some way in the **OPEN** position.
- The chimney/flue should be swept prior to installation of the appliance.
- Ensure that only one fireplace is served by the flue system.
- Ensure that the chimney/flue is continuous from inlet to termination.
- Ensure that the chimney/flue is structurally sound, so that combustion products do not come into contact with combustible material outside the chimney.
- If the appliance is to be installed under a canopy, or is open on both sides, great care must be taken to ensure the configuration is correct. If in any doubt seek expert advice.
- CHECK FLUE PULL.** Apply a smoke match to the flue opening at hearth level and observe smoke. If there is a definite flow into the flue aperture, proceed with installation. If there is not a definite flow into the flue aperture, preheat the flue for approximately 10 minutes and re-test. If there is still no definite flow towards the flue aperture the flue may need attention. **DO NOT FIT THE APPLIANCE, SEEK EXPERT ADVICE.**

#### **VENTILATION**

THE CONNECTION, VENTILATION REQUIREMENTS (IF ANY) & INSTALLATION OF THE APPLIANCE MUST BE IN ACCORDANCE WITH NATIONAL REGULATIONS AND LOCAL CODES. IF IN ANY DOUBT WITH REGARD TO ANY VENTILATION REQUIREMENTS SEEK EXPERT ADVICE. **NOTE.** In the UK Models with 6.9kW input net or less do not require additional room ventilation. In Eire **all** Evolution *Plus* Fires require additional room ventilation. For other countries refer to National Regulations and Local Codes.

### APPLIANCE LOCATION

- a. This appliance must be hearth mounted in a builders opening or under an associated independent canopy or a fireplace recess.
- b. On **NO ACCOUNT** must this appliance be sited on combustible materials or carpets. It is not suitable for combustible walls.
- c. When the appliance model has been supplied or specified with support legs, the appliance must be screwed firmly to the hearth. In the case of freestanding basket models care should be taken to secure the burner to the given basket. In most cases the burners for free standing models would have been made to ensure a correct and tight fit. Movement due to the operation of the gas burner can cause leaks. If in doubt seek expert advice.
- d. Ensure that the burner tray fits neatly into the intended location, and that you have easy access to the controls.
- e. **Ensure that there is adequate airflow to the underside of the fire (through the fire front or fret etc.** This air is required for cooling the underside of the fire & controls, as well as to provide the primary combustion air. *Do not use any front that has no slot or slots, you cannot rely on, or expect the user to space a solid front away from the fire to allow for the air supply.*  
**For Fires with a manual control valve** a minimum primary air inlet of 50 sq. cm is usually enough.  
**Fires with the Thermatronic electronic control system** require more ventilation than specified above as the electronic components need to be kept at a lower temperature to operate – refer to the section headed Temperature Limits Of The Electronic Components in the Thermatronic instructions.  
**Failure to observe this instruction is dangerous and breakdowns due to overheated controls are not covered by the guarantee. If a fireplace is properly designed and installed the controls will not overheat – it is the installer's responsibility to ensure that the installation does not allow the controls to overheat.**
- f. Ensure that no naked flame or incandescent part of the fire bed projects beyond the vertical plane of the fireplace opening.

### INSTALLATION OF THE APPLIANCE

Having ensured that the appliance application is correct and the requirements of the flue specification, ventilation demands and the gas supply are correct, proceed with the installation and assembly as follows:

- a. **In common with all other gas appliances, dirt and debris in the gas system can block the valve and gas injectors on this appliance, and faults caused by this are not covered by the guarantee. Pipework installation must comply with approved standards and practices. If you suspect that there is dirt and/or debris in the gas distribution system, fit a filter in the pipeline, before the gas valve.**
- b. Do not use jointing compound on any compression fittings on the burner or the control valve. The use of jointing compound on the compression fittings on this appliance will possibly invalidate the guarantee, as it can get into the control valve mechanism and cause it to malfunction.
- c. Ensure that there is an isolating valve in the gas supply line near the appliance.
- d. Connect the gas supply pipe from the isolating valve to the gas inlet coupling fixed to the gas burner. Make sure the supply pipe does not obstruct access to the controls.
- e. Where there are fixing holes for the burner we recommend a secure fixing be made to the hearth or fire basket.
- f. Check that all gas connections are sound. The appliance has been factory tested; however the connections may have been disturbed in transit or installation.
- g. **With cast iron inset fires and sunken burners it is most important that they are properly back filled, to avoid the possibility of a negative pressure being obtained underneath the fire resulting in flames being drawn down the sides of the burner. This is dangerous and can cause problems, which include overheating the controls (electronic systems are particularly sensitive to this) and spoiling the flame pattern.**
- h. Open fires are a hazard; it is recommended that a guard be fitted to provide protection for children, the elderly, or infirm (see National Regulations, if any).
- i. Do not adjust or put out of action the spillage monitoring system (oxypilot), or change any of its parts. Always comply with ceramic layout in the pilot area.
- j. Use only original manufacturer's parts if any replacements are needed.
- k. If there is any concern about a pressure zone causing downdraught in certain wind conditions a suitable chimney cowl should be fitted.
- l. Chesneys fire baskets (sold separately) are supplied with a grid. This grid must be removed (lifted out) before fitting the gas appliance. The gas appliance will then sit on the lugs that previously supported the removed grid.



- m. Check that the black burner insulation pad is in place, on top of the stainless steel burner. This ensures the base of the tray and the stainless steel burner assembly are not subjected to excessive temperature, which could be detrimental to the controls and may void warranty. The burner should never be run without this pad.

**Important Note!**

Before proceeding to section m. cover the slots in the burner pad with sellotape. This will ensure the burner slots are kept clear when filling the tray with vermiculite.

- n. With the slots in the burner pad covered by sellotape half fill the tray with the vermiculite supplied, then agitate with a screwdriver or some such thing until the level drops, showing that the void under the burner block is filled. Then refill to the top. Sweep any vermiculite off the top of the burner insulation pad, remove the sellotape and ensure that the slots in the burner insulation pad are clear.

It is very important to ensure the following in order not to void the warranty:

1. The gap under the burner block is filled with vermiculite
2. The burner insulation pad is in position and the slots are clear



Typical burner in basket showing black insulation pad in position and vermiculite fill, ready to lay ceramics

*Vermiculite and burner insulation pads are consumable items and spares can be purchased from Nu-Flame by quoting the 'N' number on the top right hand side of the data plate – e.g. N2.*

**ARRANGEMENT OF FUEL EFFECT**

Much of the fire's appearance is achieved by the placement of the fuel effect and Embaglow material. Follow the instructions that apply to your fire to achieve best effect.

Chesneys Alchemy Evolution *Plus* Burners are supplied with either a log effect fuel bed or coal effect fuels bed, as chosen by the customer:

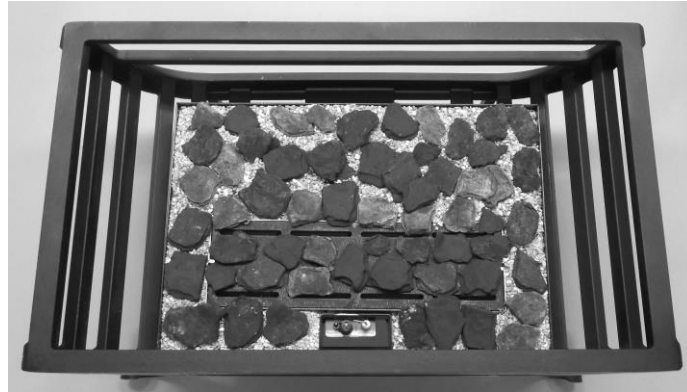


**Log set** comprising bag of vermiculite, pack of Embaglow, 5 logs & black bark chippings



**Coal set** comprising bag of vermiculite, pack of Embaglow, coals & black bark chippings

Depending on the model chosen your fire might be a different shape and size to the one shown below, but for all models begin by applying a layer of black bark chipping over the vermiculite bedding and the black burner insulation pad. This is to break up the regular appearance of the base. Take care to ensure that the burner slots are kept clear, as shown in the photograph below:



**TIPS – PLEASE READ BEFORE PROCEEDING TO THE RELEVANT LOG OR COAL LAYOUT**

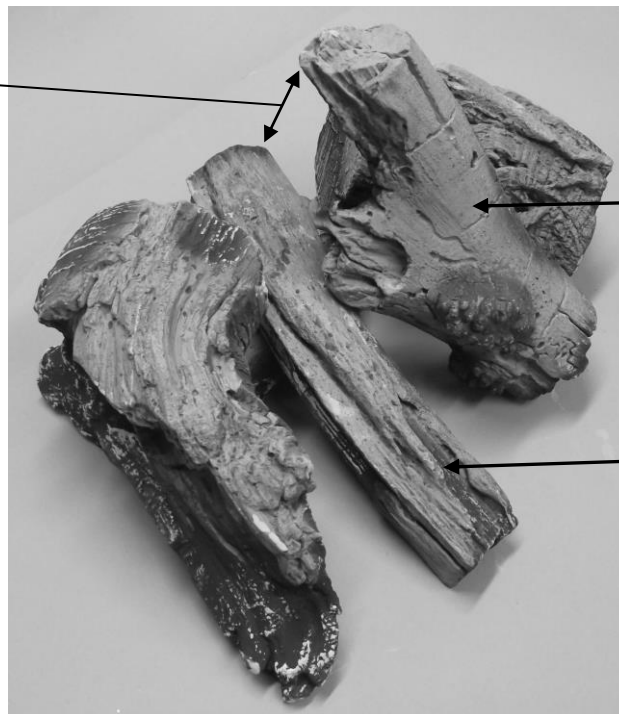
**Coal effect:**

- a. Much of the appearance of the coal effect is achieved by keeping the coals well spaced out.

**Log effect:**

- a. The same log set is used for all models. All 5 logs are used in each model, but a specific layout has been devised to suit each basket.
- b. Where logs rest on the fire bed they should be supported by a bark chipping or chippings. This achieves a good airflow around the log in order to avoid sooting.
- c. Depending on the basket chosen the logs may be supported in places against the top of the fire basket bars.
- d. The last two logs laid in all cases are the central left hand straight log and the central right hand Y shaped log, which has a very short branch and a longer branch. Place the Y shaped log so that the very short branch lays on the straight log in such a way that the longer branch is not resting on any other logs, and with a gap of around 60mm between the straight log and the long branch of the Y log.

Approx. 60mm gap to avoid soot build up



**Central Y log** – short branch resting on central straight log – long branch not resting on other logs

**Central straight log**



## ALCHEMY 18 DUCKNEST FUEL EFFECT LAYOUTS

Before commencing please also refer to the Tips section on page 6

**When laying the logs ensure that the burner slots are kept clear.**



Position the first log as shown in the centre at the back of the burner against the back bars of the firebasket.



Position the two side logs, resting on the back log and leaning high up against the side bars.



Position the straight left hand centre log resting on a bark piece at the front and on top of the back log at the rear. Then position the right hand centre Y log resting on a bark piece at the front and with the left hand short branch resting against the last log laid. Please also refer to the Log notes on page 6 for more info on this final log.

There are many shapes and sizes of coal but for the purposes of the layout we will describe them as small medium and large. This will be clearer when the coals are laid out and the instructions below are followed.

**When laying the coals ensure that the burner slots are kept clear.**



The bottom layer of coals is positioned on top of the black bark pieces.

- For the front row use small coals, laid against the front bars and this will keep the burner slots clear. Do not cover the pilot cut-out.
- Find suitably shaped medium or large coals to lay on the black burner insulation pad and place in such a way as to not cover the slots.
- For the remainder of the bottom layer use large or medium coals for the best aesthetic effect.



Place the remaining coals on top of the bottom coal layer in a similar way to the photograph above

### Embaglow material

Note. This product contains loose metal fibre which may be sharp. It is advised to wear gloves when installing Embaglow.

Tease out the fibres until they form a very loose, very light network of about 400mm long by about 60mm wide. Try to ensure that clumps of fibres are not formed. A loose network will allow gas to pass through and ensure that maximum glow is obtained. Tear the 400mm long piece into 4 or 5 sections of between 57mm and 66mm and place these on top of any visible burner slots or gaps in the fuel effect where there is flame. By raising the height of the fibres above the level of the burner a shimmering glow is obtained as soon as the fire is lit. Embaglow fibres have a long life but are a consumable item and will eventually deteriorate.

Replacements can be obtained from your stockist.

## ALCHEMY 22" DUCKNEST FUEL EFFECT LAYOUTS

Uses Alchemy 18 Universal / 22 Ducknest Gas Burner

Before commencing please also refer to the Tips section on page 6

**When laying the logs ensure that the burner slots are kept clear.**



Position the first log as shown slightly to the left of centre at the back of the burner against the back bars of the firebasket.



Position the two side logs, resting on the back log and leaning against the side bars.



Position the straight left hand centre log resting on a bark piece at the front and on top of the back log at the rear. Then position the right hand centre Y log resting on a bark piece at the front and with the left hand short branch resting against the last log laid. Please also refer to the Log notes on page 6 for more info on this final log.

There are many shapes and sizes of coal but for the purposes of the layout we will describe them as small medium and large. This will be clearer when the coals are laid out and the instructions below are followed.

**When laying the coals ensure that the burner slots are kept clear.**



The bottom layer of coals is positioned on top of the black bark pieces.

- For the front row use small coals, laid against the front bars and this will keep the burner slots clear. Do not cover the pilot cut-out.
- Find suitably shaped medium or large coals to lay on the black burner insulation pad and place in such a way as to not cover the slots.
- For the remainder of the bottom layer use large or medium coals for the best aesthetic effect.



Place the remaining coals on top of the bottom coal layer in a similar way to the photograph above

### Embaglow material

Note. This product contains loose metal fibre which may be sharp. It is advised to wear gloves when installing Embaglow.

Tease out the fibres until they form a very loose, very light network of about 400mm long by about 60mm wide. Try to ensure that clumps of fibres are not formed. A loose network will allow gas to pass through and ensure that maximum glow is obtained. Tear the 400mm long piece into 4 or 5 sections of between 57mm and 66mm and place these on top of any visible burner slots or gaps in the fuel effect where there is flame. By raising the height of the fibres above the level of the burner a shimmering glow is obtained as soon as the fire is lit. Embaglow fibres have a long life but are a consumable item and will eventually deteriorate.

Replacements can be obtained from your stockist.

**ALCHEMY 18 UNIVERSAL FUEL EFFECT LAYOUTS**  
*Uses Alchemy 18 Universal / 22 Ducknest Gas Burner*  
Before commencing please also refer to the Tips section on page 6

**When laying the logs ensure that the burner slots are kept clear.**



Position the first log as shown in in the centre at the back of the burner against the back bars of the firebasket.



Position the two side logs, resting on the back log and leaning high up against the side bars.



Position the straight left hand centre log resting on a bark piece at the front and on top of the back log at the rear. Then position the right hand centre Y log resting on a bark piece at the front and with the left hand short branch resting against the last log laid. Please also refer to the Log notes on page 6 for more info on this final log.

There are many shapes and sizes of coal but for the purposes of the layout we will describe them as small medium and large. This will be clearer when the coals are laid out and the instructions below are followed.

**When laying the coals ensure that the burner slots are kept clear.**



The bottom layer of coals is positioned on top of the black bark pieces.

- For the front row use small coals, laid against the front bars and this will keep the burner slots clear. Do not cover the pilot cut-out.
- Find suitably shaped medium or large coals to lay on the black burner insulation pad and place in such a way as to not cover the slots.
- For the remainder of the bottom layer use large or medium coals for the best aesthetic effect.



Place the remaining coals on top of the bottom coal layer in a similar way to the photograph above

**Embaglow material**

Note. This product contains loose metal fibre which may be sharp. It is advised to wear gloves when installing Embaglow.

Tease out the fibres until they form a very loose, very light network of about 400mm long by about 60mm wide. Try to ensure that clumps of fibres are not formed. A loose network will allow gas to pass through and ensure that maximum glow is obtained. Tear the 400mm long piece into 4 or 5 sections of between 57mm and 66mm and place these on top of any visible burner slots or gaps in the fuel effect where there is flame. By raising the height of the fibres above the level of the burner a shimmering glow is obtained as soon as the fire is lit. Embaglow fibres have a long life but are a consumable item and will eventually deteriorate.

Replacements can be obtained from your stockist.

## ALCHEMY 22 UNIVERSAL FUEL EFFECT LAYOUTS

Before commencing please also refer to the Tips section on page 6

**When laying the logs ensure that the burner slots are kept clear.**



Position the first log as shown to the left of centre at the back of the burner against the back bars of the firebasket.



Position the two side logs, resting on the back log and leaning against the side bars.



Position the straight left hand centre log resting on a bark piece at the front and on top of the back log at the rear. Then position the right hand centre Y log resting on a bark piece at the front and with the left hand short branch resting against the last log laid. Please also refer to the Log notes on page 6 for more info on this final log.

There are many shapes and sizes of coal but for the purposes of the layout we will describe them as small medium and large. This will be clearer when the coals are laid out and the instructions below are followed.

**When laying the coals ensure that the burner slots are kept clear.**



The bottom layer of coals is positioned on top of the black bark pieces.

- For the front row use small coals, laid against the front bars and this will keep the burner slots clear. Do not cover the pilot cut-out.
- Find suitably shaped medium or large coals to lay on the black burner insulation pad and place in such a way as to not cover the slots.
- For the remainder of the bottom layer use large or medium coals for the best aesthetic effect.



Place the remaining coals on top of the bottom coal layer in a similar way to the photograph above

### Embaglow material

Note. This product contains loose metal fibre which may be sharp. It is advised to wear gloves when installing Embaglow.

Tease out the fibres until they form a very loose, very light network of about 400mm long by about 60mm wide. Try to ensure that clumps of fibres are not formed. A loose network will allow gas to pass through and ensure that maximum glow is obtained. Tear the 400mm long piece into 4 or 5 sections of between 57mm and 66mm and place these on top of any visible burner slots or gaps in the fuel effect where there is flame. By raising the height of the fibres above the level of the burner a shimmering glow is obtained as soon as the fire is lit. Embaglow fibres have a long life but are a consumable item and will eventually deteriorate.

Replacements can be obtained from your stockist.

### COMMISSIONING THE FIRE

- a. Close all doors and windows, check operation of controls and burn for 5 minutes. Test for spillage of the flue products using a smoke match. Pass the lighted match along the top front edge, just inside the fire opening. If there is a small amount of spillage, run the fire for a further 10 minutes and re-test for spillage. If there is still spillage after the second test, **DISCONNECT THE FIRE AND SEEK EXPERT ADVICE.**

**NOTE.** If there are extractor fans in the room or adjacent rooms, these must be running at full speed setting with all interconnecting doors left OPEN.

- b. A smell may be experienced when the appliance is first commissioned. This is due to the new components of the fire. These odours will cease after the first few hours of burning.

### SPECIAL NOTES

- a. This fire should be serviced every 12 months to ensure safe operation.  
b. Servicing and spares are available from your stockist.  
c. The fire may smell for the first few hours. This is due to the newness of the components and will cease in a few hours. If it does not consult your dealer straight away.  
d. Open fires are a hazard; it is recommended that a guard be fitted to provide protection for children, the elderly, or infirm (see National Regulations, if any).  
e. If using a vacuum cleaner to clean the appliance be very careful not to suck up the vermiculite.  
f. Debris and soot should be cleaned from the fire with a soft brush.  
g. Regularly check that the fixed air supply (if applicable) is free of any obstructions.  
h. If property improvements are made, such as double glazing or cavity wall insulation added, then the fire spillage test should be made again to ensure all products of combustion enter the flue.

**Remind the Customer that in the interests of Safety they MUST maintain their Carbon Monoxide Alarm.**

**Note.** SEEK EXPERT ADVICE IF YOU ARE UNSURE OF ANY POINTS REGARDING THE SAFE USE OF THIS APPLIANCE.

### FAULT FINDING GUIDE. SYMPTOMS AND POSSIBLE CAUSES

#### 1. NO SPARK

- Mertik Thermatronic Controls – Replace the batteries in the receiver and handset.
- Check there is no dust/debris shorting out the electrode or blocking gas from the pilot.
- Check that gas is flowing from the pilot during the ignition sequence. Clean or Replace as required.
- Pilot Burner damaged, or too far away from Electrode, or too close.
- Ignition lead has become detached from electrode and needs reconnecting.
- Check the condition of the Electrode, if it sparks intermittently it may be cracked, replace.
- Soot on the Pilot assembly is shorting the spark. Clean this area with a soft brush.
- Check the ignition lead isn't trapped and or shorting, replace if required. Also check its condition and that it is connected to the Electrode and Receiver with the Thermatronic System. For the Manual System a replacement will involve a new control. For the Mertik Thermatronic System a separate ignition lead is available.

#### 2. SPARK IS VISIBLE BUT PILOT WILL NOT LIGHT

- Check that there is gas to the appliance.
- Ensure that isolating valve or restrictor elbow is in the OPEN position.
- Valve inlet has become blocked with debris. Clean.
- Pilot injector blocked. Clean.

#### 3. PILOT FLAME SHORTENS, OR GOES OUT, WHEN MAIN BURNER IS SELECTED

- This indicates insufficient gas pressure to the appliance. Check for debris obstruction.
- Check that there are no acute bends in the supply pipe and ensure that the correct diameter supply pipe has been used.
- Check pressure setting.

**NOTE.** If the appliance has been connected to a supply servicing another appliance the supply pipe may not have sufficient capacity to serve both appliances. Seek advice.

#### 4. FIRE OPERATES FOR A WHILE THEN GOES OUT

- Check the supply pressure is correct at the isolation elbow with all other gas appliances working. If the pressure is low or fluctuating up and down check gas pipe sizing, quality of pipe bending. Check for debris in the gas supply, pilot pipe and or gas filter if fitted.
- Carry out a spillage test from cold. Look for signs of Discoloured Walls or Trims as this may be an indication of a Downdraught Problem.
- Establish how long the fire stays alight then repeat the Spillage Test around this time.
- For a Thermatronic System check that the Control is functioning correctly, specifically the Thermocouple
- Electrical Connections and Pilot Flame size.

**Downdraught problems can be related to the condition of the flue, chimney termination or geographical location and so if a Flue Problem is thought likely but no problem is found during the investigation isolate the fire and seek expert advice.**

#### 5. THERMATRONIC RADIO FREQUENCY CONTROL SYSTEM DOES NOT OPERATE

- Check the radio frequency control is being correctly operated.
- Replace the batteries.
- Reset the Mertik Maxitrol Logic Circuits.

## 6. FOR MANUAL SYSTEMS

### THE PILOT GOES OUT WHEN KNOB IS RELEASED OR AT REGULAR INTERVALS

- Check that thermocouple is not loose. (It should only be nipped up as it is just an electrical and not a gas connection.)
- Thermocouple is damaged and needs replacing.
- Thermocouple operated magnetic valve faulty – replace gas valve.

### FOR THERMATRONIC SYSTEMS

- Check that thermocouple is not lose at the Interrupter Connection (See Thermatronic Diagram on page 14), (It should only be nipped up It as it is just an electrical and not a gas connection.)

## 7. BLUE FLAME

- It normally takes 20 minutes for the fire to reach correct working temperature, by which time most of the blue flame should have gone. Continuous blue flame is caused by poor coal layout or excessive updraught of the flue. Seek advice from your stockist.

## 8. POOR FLAME PICTURE

- Check gas pressure.
- Ensure that there are no obvious obstructions to gas supply pipe.
- Re-lay the fuel effect and Embaglow as shown in the relevant photographs.

## SERVICING INSTRUCTIONS

**IMPORTANT: Turn OFF gas supply before servicing commences.**

1. Remove all debris and dust from fire.
2. Remove Embaglow material and fuel effect from burner tray and gently dust off with a soft brush.
3. Disconnect gas supply and remove burner tray assembly.
4. Carefully remove granules and retain.
5. Check Pilot and Gas valve assembly for gas soundness. Continue with service as required.
6. Refer to vermiculite section on page 5.
7. When replacing the vermiculite and re-laying the firebed please refer to the ARRANGEMENT OF FUEL EFFECT section commencing on page 6 of these instructions.
8. Mertik Thermatronic System. Change the batteries in both the Handset and the Receiver.

## Nu-Flame Warranty and Repair Procedure

Nu-Flame fires are guaranteed for 1 year from the date of purchase. During that time our guarantee is to repair at our option, or replace at no charge a fire that proves to have faulty components or workmanship.

**Telephone Help Line.** In the event of a problem with a fire the first course of action should be to telephone our technical department on 020 8254 6802 during normal working hours 9 - 5.30 Monday - Friday (closed 1 - 1.30). If appropriate this should be done before the installer leaves site as we may well be able to resolve the problem over the phone and in any event it may well save the installer a return visit to site. If we are not able to resolve the problem over the phone we may ask you to return the fire, and will log your details and give you a return reference number.

**Return The Fire.** It is a condition of the warranty that if we request you to return the fire to the factory, at the outset of any problem, you do so. This is both for safety reasons and due to the fact that we have the trained staff and necessary spares to carry out the repairs. The burner can then be thoroughly inspected and any signs of installation faults can be reported back to you. After any repair work is carried out the flow rates can be checked and re-set if necessary in order to fully comply with CE approval.

**Note:** It is a condition of the warranty that you do not return any parts to us unless we request you to do so. For example if we request that the burner only is returned and you send the entire appliance, the fuel bed and other items could be damaged or lost during the return delivery to us. We will not be liable for any such breakages, or losses.

Under no circumstances should any attempt be made to repair the burner on site without our express knowledge and approval during the warranty period.

This guarantee is given subject to the following provisions:

1. That the installation is carried out by a Gas Safe registered installer (we may require their registration details).
2. That the appliance is installed and used in accordance with our Installation & User instructions.
3. That the gas supply pressure at the appliance is not more than 3mbar below the gas pressure stated on the data plate when the appliance is running on high flame, with any other major gas appliances also running.
4. That the fireplace and flue system conform to relevant local codes, building regulations and British Standards.
5. This Guarantee is not transferable and relates to the original installation only.
6. The appliance has not been subject to misuse or accident or been modified or repaired by any person other than the authorised employee or authorised representative of Nu-Flame Ltd.
7. The Record Data section on the front of the Installation & Servicing Instructions is to be completed on installation.
8. Nu-Flame Ltd accepts no liability for any consequential loss or damage arising from the use or failure of the product or any information provided, including, but not limited to, economic or financial loss, damage to peripheral equipment or products, loss of use, productivity or time.
9. That the serial no. data plate on the burner is intact.

This guarantee in no way reduces your statutory rights.

### **Chargeable repairs during and after the warranty period**

If a repair is chargeable during the warranty period, due to installation faults we will inform you and where possible give you a quote, or if this is not possible, a price guide before starting work. We cannot always give a firm cost until we commence the repair as it is not always possible to tell which components have been damaged especially on electronic control systems.

## UK DECLARATION OF CONFORMITY

# UK Declaration of Conformity

**Name of Manufacturer** : Nu-Flame Ltd  
**Address of Manufacturer** : Unit 4  
: Kimpton Trade & Business Centre  
: Minden Road  
: Sutton  
: Surrey  
: SM3 9PF

**Telephone** : 020 8641 9992

**Manufacturing Location** : As above

**This declaration of conformity is issued under the sole responsibility of the manufacturer above for:**

**Product** : Chesney's Alchemy series  
**Certificate Number** : 18GR0302/00


**The objects of the declaration described above are in conformity with relevant harmonised legislation**

The Product Safety and Metrology etc, (Amendment etc.) (EU Exit) Regulation 2019 (S.I 2019/696).

The harmonised standards and technical specification have been applied

**Where the Essential Requirements of the GAR have been met and approved by Notified Body:**

**Responsible Test House** : Kiwa Nederland B.V.  
**Address** : Wilmersdorf 50  
: P.O. Box 137  
: 7300 AC Apeldoorn  
: The Netherlands

**Authorised Signature of Manufacturer:** 

**Date of Issue:** 1<sup>st</sup> May 2023



## EU DECLARATION OF CONFORMITY

# EU Declaration of Conformity

**Name of Manufacturer** : Nu-Flame Ltd  
**Address of Manufacturer** : Unit 4  
: Kimpton Trade & Business Centre  
: Minden Road  
: Sutton  
: Surrey  
: SM3 9PF

**Telephone** : 020 8641 9992

**Manufacturing Location** : As above

**This declaration of conformity is issued under the sole responsibility of the manufacturer above for:**

**Product** : Chesney's Alchemy series  
**Certificate Number** : 18GR0302/00


**The objects of the declaration described above are in conformity with relevant harmonised legislation**

Regulation (EU) 2016/426 relating to appliances burning gaseous fuels

The harmonised standards and technical specification have been applied

**Where the Essential Requirements of the GAR have been met and approved by Notified Body:**

**Responsible Test House** : Kiwa Nederland B.V.  
**Address** : Wilmersdorf 50  
: P.O. Box 137  
: 7300 AC Apeldoorn  
: The Netherlands

**Authorised Signature of Manufacturer:** 

**Date of Issue:** 1<sup>st</sup> May 2023

# MERTIK MAXITROL

© 2008 Mertik Maxitrol

## GV60 and Mertik Maxitrol Cables with Layout Options

